

Community Capacity Building and Nature-Based Flood Resiliency



Equity in Natural and Nature-based Solutions Workshop

January 18, 2023





Bordered by the Ashley River to the west and I-26 to the east, Rosemont is one of several African American communities that grew out of the operations of large phosphate plants along the Charleston Neck. The Neck and North Area host 21 phosphate and fertilizer plants

A majority of the laborers were freedmen or former slaves.

Communities such as Silver Hill, Magnolia and Rosemont quickly developed to provide housing for the hundreds of workers in these phosphate

"It's a good close group of people from generation to generation...There's a sense of taking care of those who are residents there."

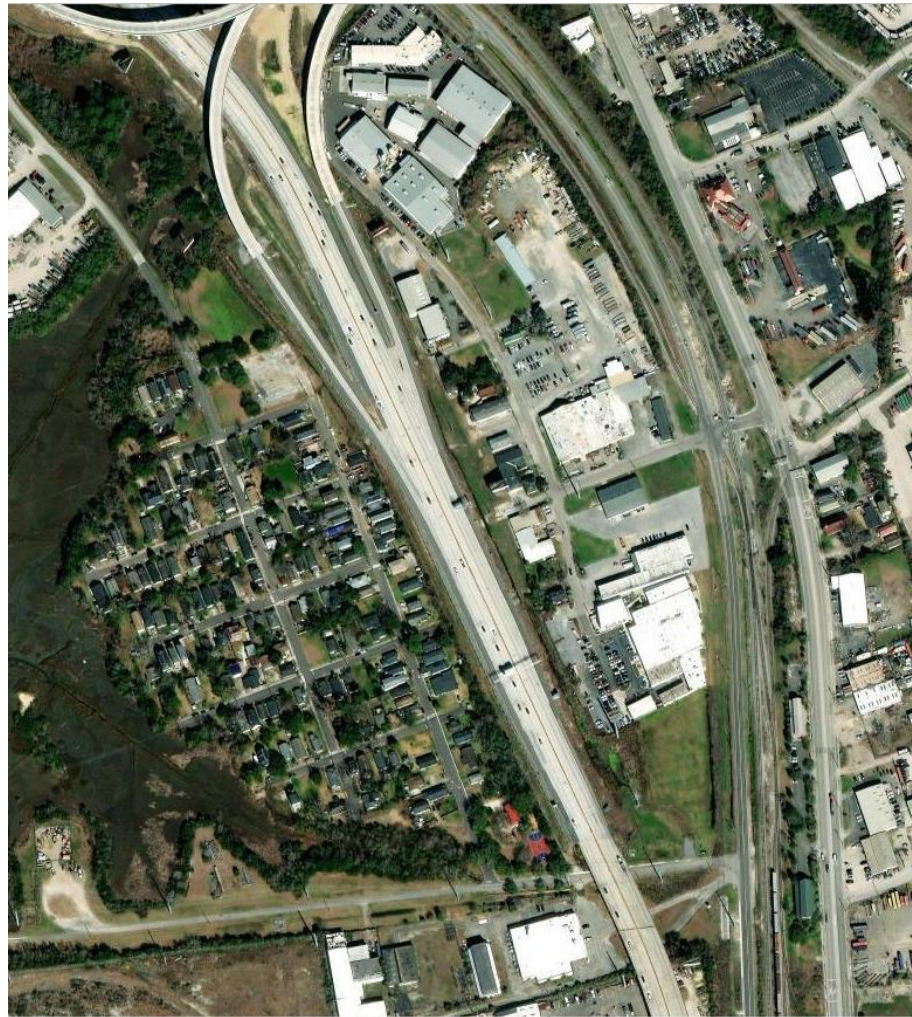
"...this'll always be home. And I'm always gonna care about what happens."

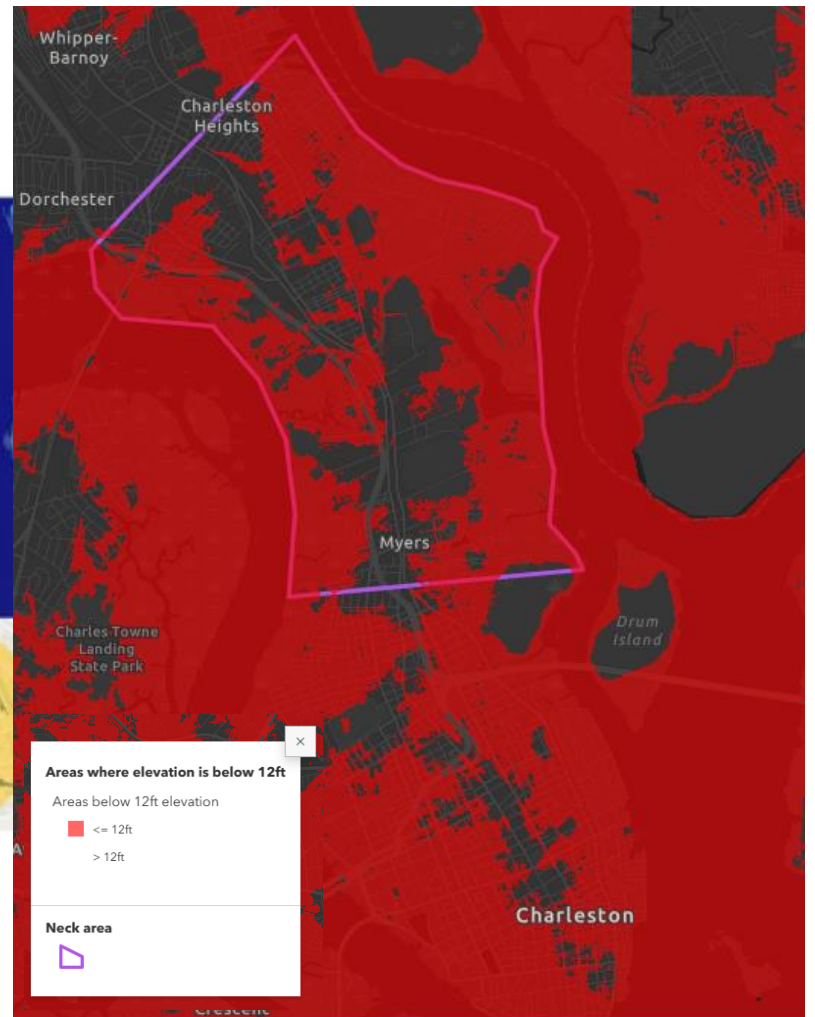
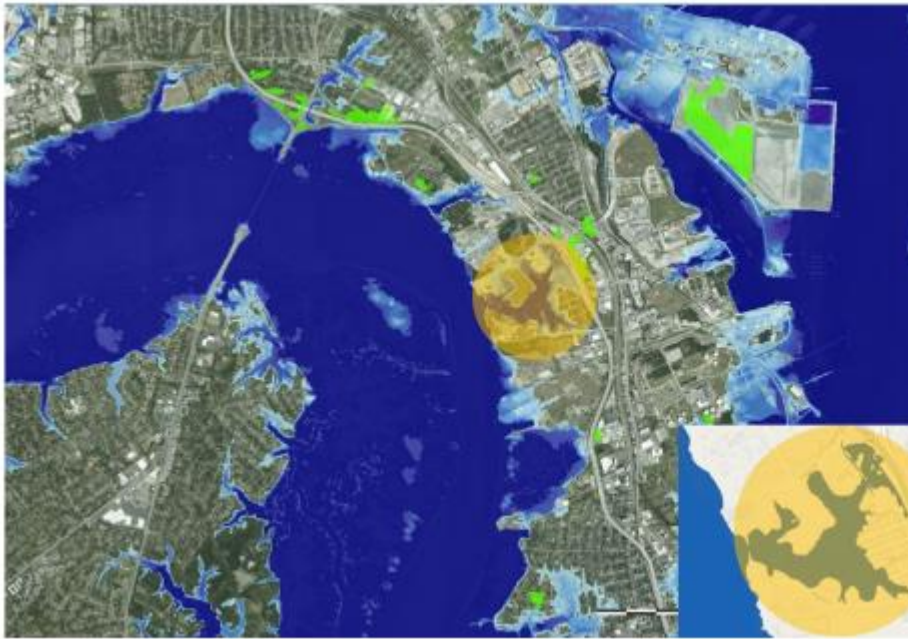
"...there's a lot of historical values about Rosemont. It's one of the first black African American neighborhoods established after the reconstruction era...the land, the people, are all very important in the history of the City of Charleston."

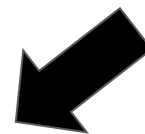
"If these areas didn't exist, these communities didn't exist, I wouldn't be who I am."

"I see it as a badge of honor for me to live there and raise my children there."

"I just love it because it's in the center of everything, it takes just a matter of minutes to get anywhere that you need really, so the convenience is great."







"It's one of those communities that's culturally underserved and the disparities is visible in the housing, the jobs..."

"...the diversity it's changing, before it was like an all African American community and now you see other ethnicities moving in the neighborhood."

"...there's a lot more traffic and a lot more development coming around us in the area..."

"I want to grow a garden and we've thought about it, but with that chemical plant so nearby I've always had concerns about growing food..."

"...I feel like we are a forgotten community."

"...Rosemont is Rosemont and that isolation exists and all the other disparities, it's a game of survival."

"...people started moving out and people came in renting...some people if they're renting it's not theirs so they don't care about it..."

"...there were a lot of things this community had...like a little grocery store, we had cleaners, we had all kinda things that people had businesses and stuff in this community, you know all that changed."



Challenging Dynamics of Communities

- A continuum that is free flowing
- Evolving (moving back and forth)
- Articulation of Needs to spark change
- Competing Interest
- Confidence
- Able Leadership
- Trust

