



EJ STRONG

Strengthening Communities for Disaster Risk
Reduction, Response & Recovery in SC

South Carolina Department of Health and Environmental Control
Healthy People. **Healthy Communities.**



Community- Managed Disaster Risk Reduction (CMDRR)

Empowerment

- Planning
- Responding
- Rebuilding

Build Capacity

Resilience

2020 US EPA Cooperative Agreement

- SEJCA awarded October 2020
 - Special consideration was given to applicants proposing actions to address the impacts of COVID-19 on communities with EJ concerns
- \$200,000 awarded to recipients
- Environmental Statutes: Clean Water Act & Clean Air Act; Impacts of COVID-19 on Underserved Communities & Vulnerable Populations
- DHEC and its partners were 1 of 10 selected
- October 2020 – September 2023



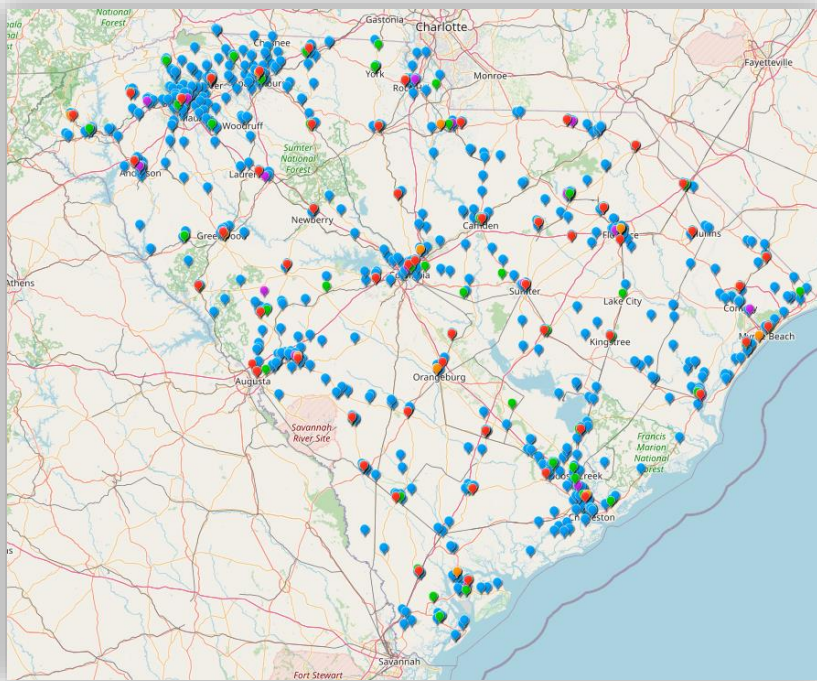
EJ Strong: Learning Objectives



FILE/STAFF
A cyclist on Meeting Street near Spruill Avenue navigates the remnants of a deluge in July 2018. North Charleston communities have begun disaster relief training to help prepare low-wealth neighborhoods better respond during crises.

- **Assist** in the identification and prevention of disaster-related environmental & health effects, especially flooding within communities
- **Conduct** disaster planning and capacity building, especially while identifying vulnerable populations
- **Identify and direct** needed resources during and after a disaster
- **Increase** individual and community resilience
- **Practice** hands-on exercises in response, recovery, and mitigation activities

EJ Strong: Learning Objectives



- Evaluate ways to mobilize after a disaster with an emphasis on food insecurities; ecosystems; and the causes, effects, extent, prevention, reduction and possible elimination of water and air pollution following a disaster
- Identify Lessons Learned & Best Practices
- Identify additional training needs

EJ Strong

- Workshops, Field Practicums, Virtual Classes
- Participants live in and/or represent North Charleston & EJ Hub communities
- Certification given by USC to participants upon completion of all training
- Sustainable Project Model for other communities
- Participants serve as a Captain for community



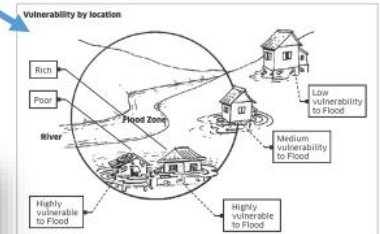
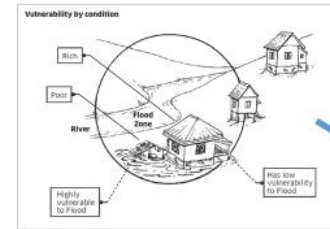
Paradigm Shift

Disaster Risk = Hazard x Vulnerability



Disaster Risk = $\frac{\text{Hazard} \times \text{Vulnerability}}{\text{Capacity}}$

Paradigm Shift 2

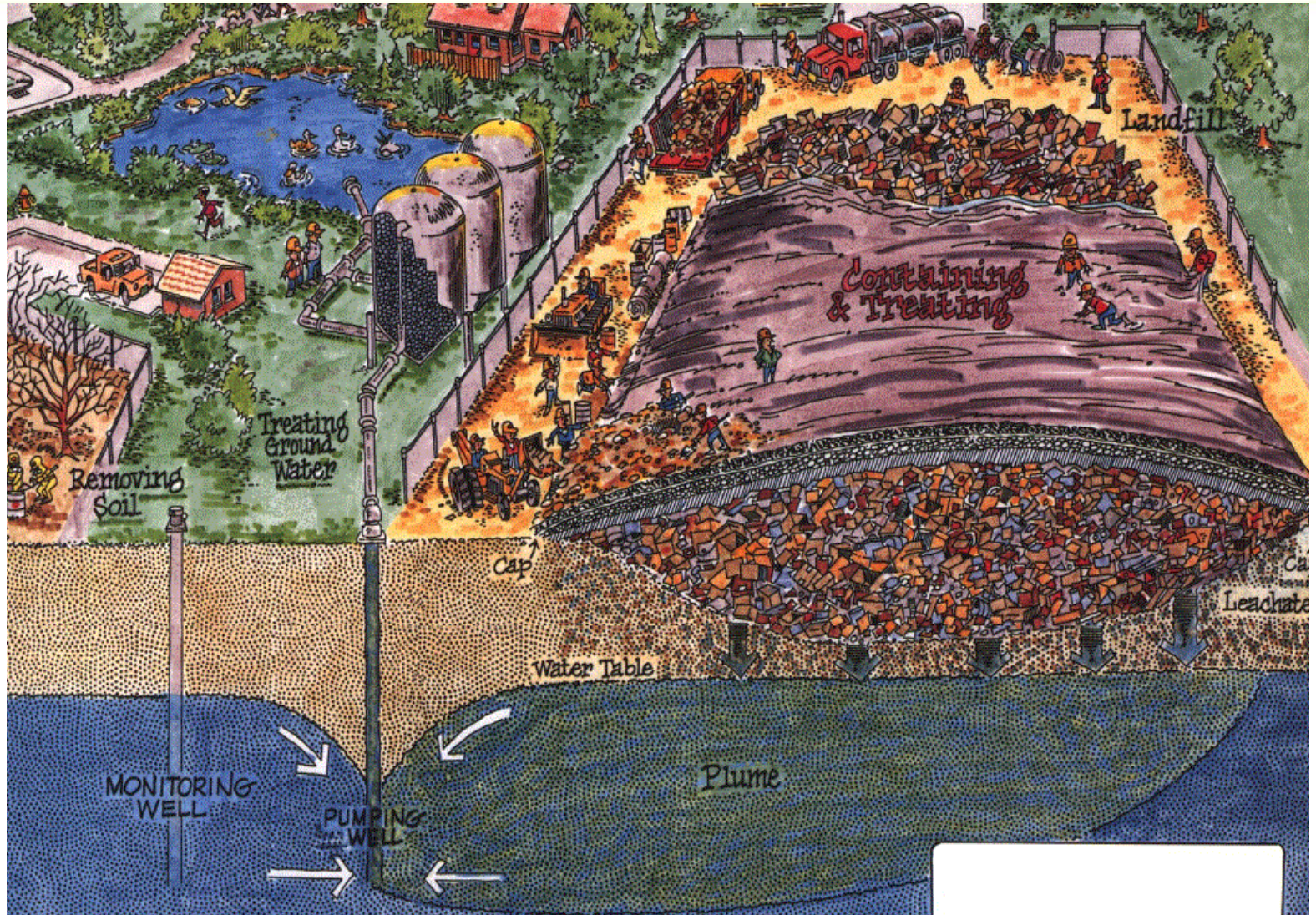


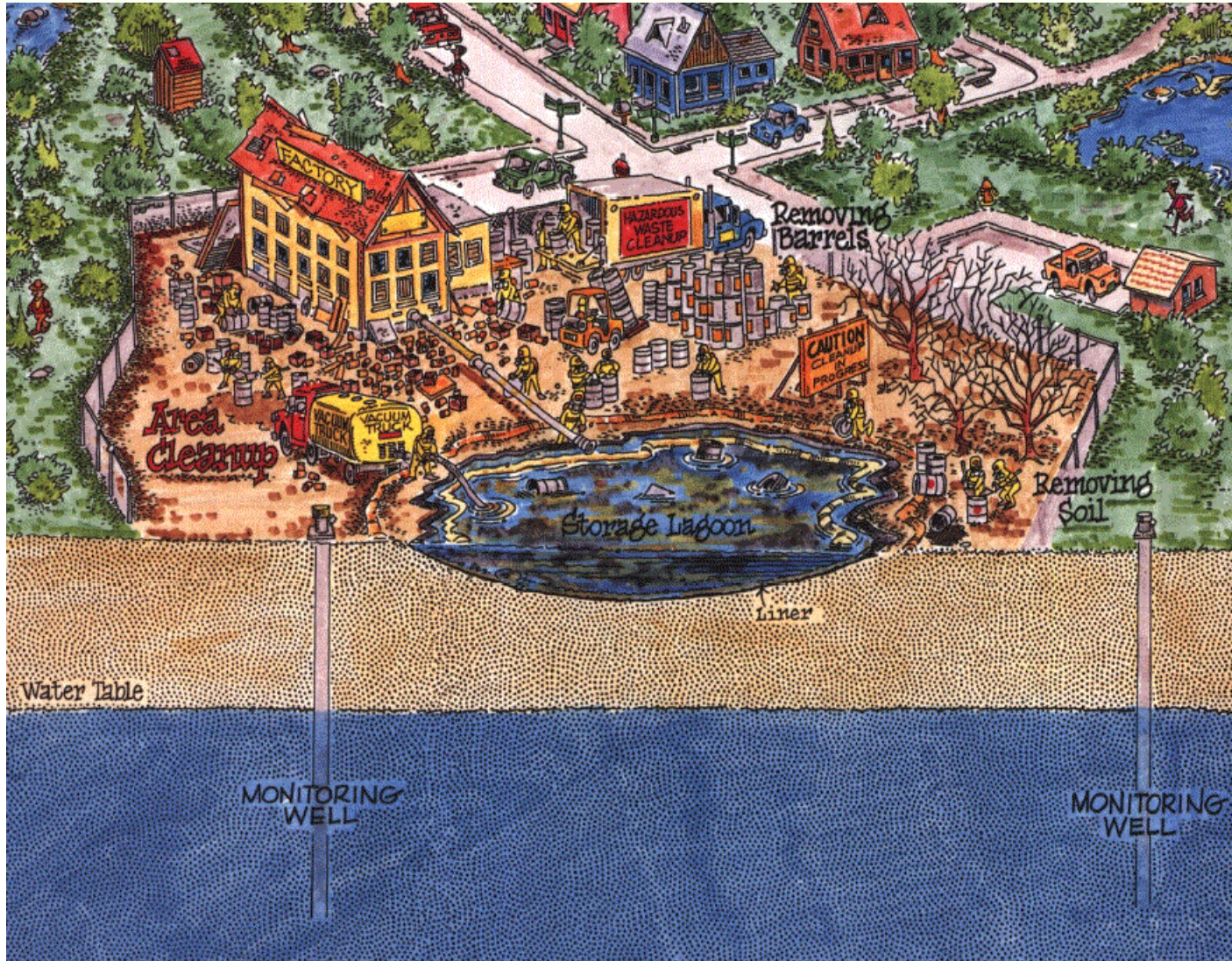
Attachment B: SC DHEC's Logic Model

Resources/Inputs	Activities	Outputs	Audience	Short-Term Outcomes (6 – 12 months)	Intermediate Outcomes (12 – 24 months)	Long-Term Outcomes (2+ years)
<ul style="list-style-type: none"> Budget EJ Community Leaders Partnering organizations: DHEC, College of Charleston, USC, LAMC, Clemson, EPA In-kind donations/staff commitments Graduate Student Research Assistant Interns 	<ul style="list-style-type: none"> Workshops and Trainings Networking with stakeholders and partners Hazards, Vulnerability and Capacity assessments Entering data collected into database Train-the-Trainer Expand Clemson University's Food Access Map 	<ul style="list-style-type: none"> Training Modules & Resources Community Disaster Exercises Community Involvement Disaster Plan Expand Resource for Communities Assessments Conducted/Information collected Valuable information available to local EM Professional Designed Webinars for future trainings 	<ul style="list-style-type: none"> EJ leaders Community residents Local EM 	<ul style="list-style-type: none"> Increased understanding and/or awareness of EJ community, risk reduction, recovery, response Preparation and education of graduate student interns Identification, connection with, and assist with expanding available community resources Identification of vulnerable populations Database to house assessment information developed 	<ul style="list-style-type: none"> Community disaster risk assessment Improved response and recovery Strengthen partnerships Confidence in addressing issues pertaining to risk reduction, recovery, response Enhanced Leadership skills 	<ul style="list-style-type: none"> Capacity building within EJ community Increase in the number certified in Emergency Management Reduction of community identified risks Development of best practices for mobilizing after a disaster Expanded Food Access Map Database for assessments completed









Revitalization & Remediation

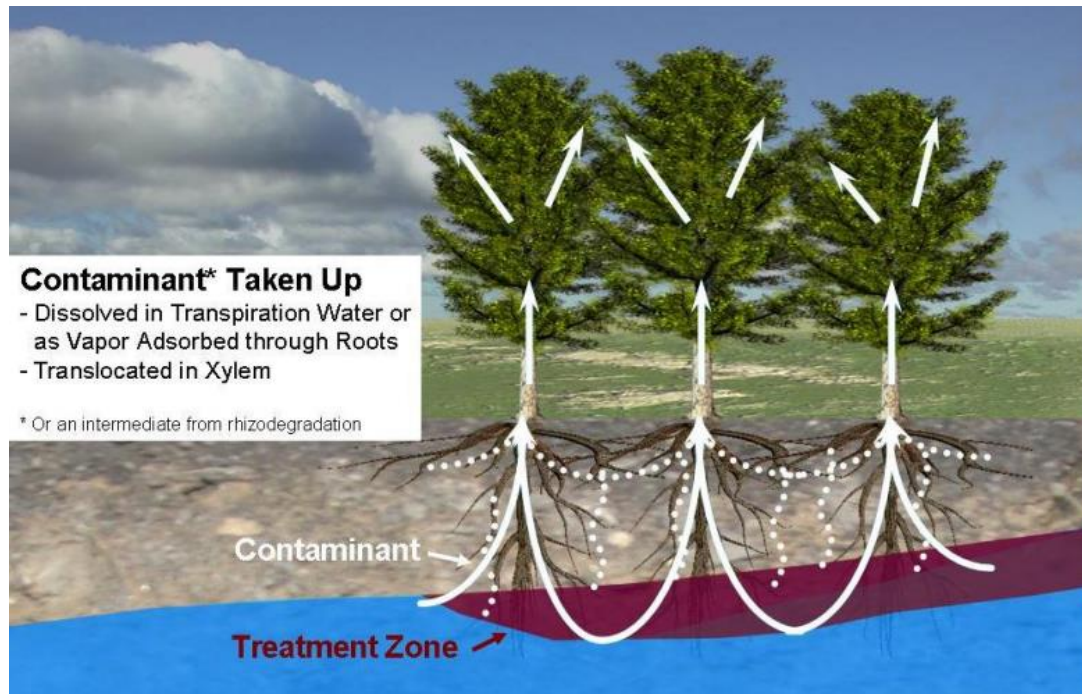


Figure 1-8. Phytoextraction mechanisms.

<https://itrcweb.org/teams/projects/phytotechnologies>



Keisha D. Long

Environmental Justice Coordinator

2600 Bull Street

Columbia, SC 29201

803-898-0774

803-312-1469

longkd@dhec.sc.gov

South Carolina Department of Health and Environmental Control

Healthy People. **Healthy Communities.**